

the basicCs of colormanagement

basI**C**Color[®]

A PIECE OF ART ...

...BELONGS IN A MUSEUM!

d a t a s h e e t - b a s I C C o l o r c o n t r o l

basI**C**Color GmbH
Falkenstraße 15 a
D-82377 Penzberg
Tel.: +49-(0) 88 56/93 25 05
info@basI**C**Color.de

b a s I **C** C o l o r
... because it simply works!

[www.basI**C**Color.de](http://www.basICColor.de)

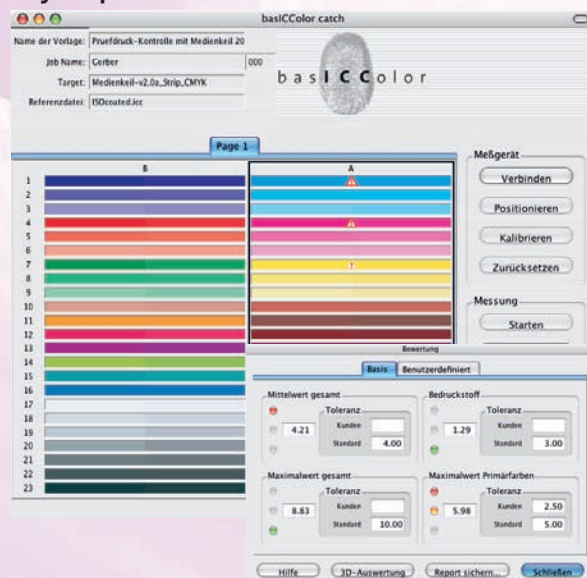


basIcColor®

... because it simply works!

control

A proof print should be a carbon copy of your press sheet!



Are you familiar with that problem: You have a proof print in your hands and you do not know how accurate it is? Does the proof match the offset standard or it is just a "colorful" inkjet print? With basIcColor control the uncertainty is history. basIcColor control comes with a complete set of reference values for all printing conditions standardized in ISO 12647-2. You just measure an Ugra/FOGRA media wedge that has been included in the proof print and you get an unbiased evaluation based on four criteria defined by FOGRA: paper simulation, average and maximum deviation of all color patches and maximum deviation of the four process inks. The results are visible at one glance – with a simple red/green „traffic light“ system. If your customer is more demanding than the standard, you can add customers' criteria, which show a yellow traffic light, if exceeded. In order to proof to your printer's that the proof print is OK, you can print a report on a label that you stick on the proof. No open questions and no more misunderstanding! Of course basIcColor control can be used with other targets as well, e.g. basIcColor RGB control wedge for QC of film recorders and minilabs.

basIcColor control – and you are in control.

Eigenschaften:

- ▶ Quality control module for basIcColor catch
- ▶ Supports all common printing targets and control wedges
- ▶ Supports all common measurement instruments
- ▶ FOGRA Reference data for CMYK Media Wedge 1.x and 2.0 included
- ▶ Creates Individual reference files from ICC profiles
- ▶ Detailed QC report
- ▶ Prints a certificate on adhesive label
- ▶ Pass/Fail information with simple traffic light system
- ▶ 3D visualization of gamut and measured color values
- ▶ Easy handling with predefined templates and jobs (XML)

System Requirements (Minimum):

- M** Macintosh
- W** Windows
- ▶ Mac OS X 10.3.9
- ▶ Windows® 2000 mit SP3 oder Windows® XP
- ▶ 64 MB available RAM
- ▶ Supported measurement instrument not included
- ▶ Appropriate target not included

Supported Targets:

- ▶ Ugra/FOGRA CMYK Media Wedge 1.x, 2.0(a) (not included)
- ▶ basIcColor RGB process control bar (included as TIFF file)
- ▶ basIcColor print3c and print4c targets (included as TIFF files)
- ▶ IT8.7/3, ECI 2002, GMG etc.

Other Products, Bundles and Options:

- ▶ basIcColor catch pro (spectral und density)
- ▶ basIcColor certify
- ▶ Ugra/FOGRA Media Wedge CMYK 2.0
- ▶ in catch pro
- ▶ in UV catch pro
- ▶ Spectrophotometer eye-one pro (UV-cut) and 1 seat basIcColor catch pro
- ▶ **DYMO Label Printer** w/ 6 rolls self-adhesive labels
- ▶ Technical Support Agreement (TSA)
- ▶ Beinhaltet 12 Monate e-mail und Telefon Support und kostenlose Programmupgrades (für alle erworbenen basIcColor catch Optionen).

All published price s, specifications and services are provided „As Is“ without warranty of any kind and subject to change without notice. Published prices do not include taxes and shipping. Please ask for educational discounts!

basIcColor GmbH

Falkenstraße 15 a
D-82377 Penzberg
Tel.: +49-(0)8856/932505
info@basIcColor.de
www.basIcColor.de