

basICCs of color



**EXPOSURE – OK
FOCUS – CORRECT ...**

... AND WHAT ABOUT COLOR?

D a t e n b l a t t b a s I C C o l o r i n p u t

basICColor GmbH
Falkenstraße 15 a
D-82377 Penzberg
Tel.: +49-(0)8856/932505
info@basICColor.de

b a s I C C o l o r
... because it simply works!

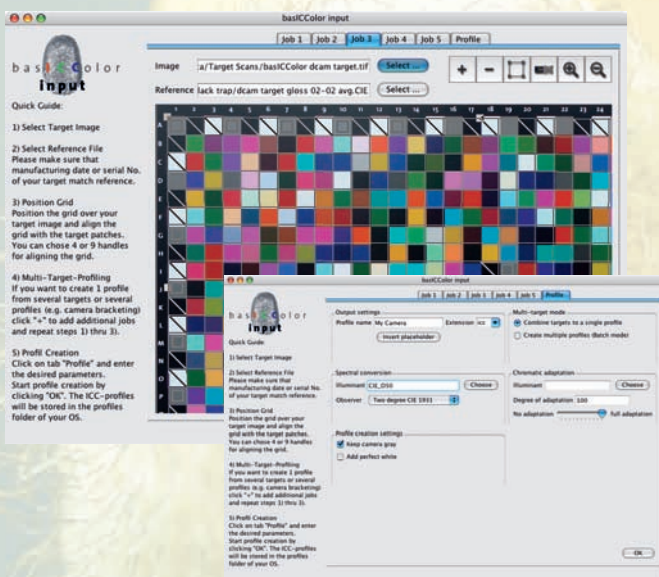
www.basICColor.de



... because it simply works!

input

Exposure – OK, Focus – Correct ...
... And What About Color?



Scanner profiling is not a problem any more, basICColor *input* profiles scanners along the way. The real challenge is camera profiling. That's why we developed new technologies to master this complex task.

basICColor *input* incorporates the latest achievements in color science in order to assure highest profile quality.

Multi target profiling lets you combine several targets into one profile. This compensates for random errors in target shots. By using different target materials, you can adapt the profile to specific material properties and thus reduce or even eliminate metameric failure.

Batch profiling allows you to generate multiple profiles, e.g. from bracketed exposures, and select the best profile for your individual situation.

You will receive the best results with the basICColor *dcam target +*, with integrated black trap for absolute black. For gray balancing your camera under any lighting condition, the basICColor *dcam target +* has an integrated, spectrally neutral gray card on the back of the box.

Features:

- ▶ basICColor *input* creates ICC profiles for scanners and digital cameras
- ▶ Chromatic adaptation to different lighting conditions
- ▶ Multi target profiling
- ▶ Batch profiling
- ▶ Creates colorimetric gray balance or retains camera gray
- ▶ Stores profiles in the user folder (Mac OS X) oder system folder (Windows)
- ▶ Supports all kinds of scanner or camera targets, e.g. IT8/7.1+2, HutchColor Target, Gretagmacbeth ColorChecker and basICColor *dcam target +*

System Requirements (minimum):

- ▶ **M** Macintosh
- ▶ Mac OS X 10.3.9
- ▶ **W** Windows
- ▶ Windows® 2000 with SP3 or Windows® XP
- ▶ Color monitor (Res. 1024 x 768), Video card 24 bit, scanner or digital camera

Products, Bundles and Options:

- ▶ basICColor *input*
- ▶ basICColor *INbox*
 - basICColor *input*
 - basICColor *dcam target + w/ black trap*
 - basICColor *scan target*
 - basICColor *gray card mini*
 - basICCaliCube
- ▶ basICColor *dcam target +*
 - Camera target w/ black trap
- ▶ basICColor *scan target*
- ▶ HutchColor targets
- ▶ Technical Support Agreement (TSA)

provides 12 months of e-mail and telephone support at basICCare Center, and free product updates (for any number of seats).

Please refer to the price list on www.basICColor.de

*All published specifications and services are provided "As Is" without warranty of any kind and subject to change without notice.
Please ask for volume and educational discounts!*

basICColor GmbH

Falkenstraße 15 a
D-82377 Penzberg
Tel.: +49-(0) 88 56/93 25 05
info@basICColor.de
www.basICColor.de